

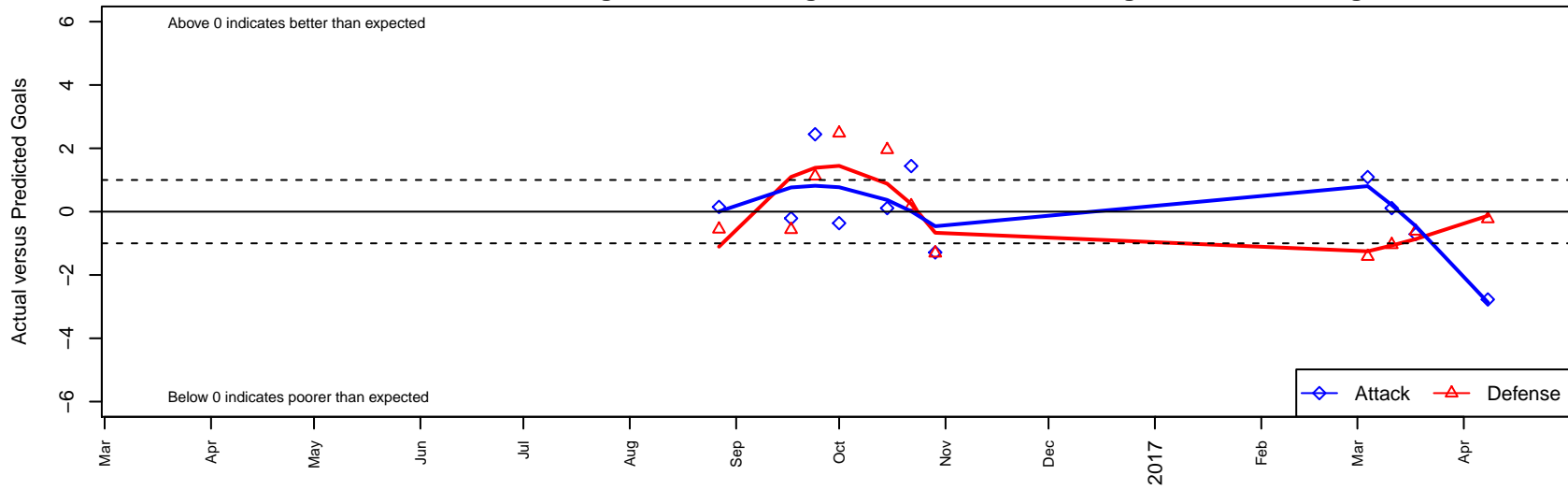
# Mountain Home G03

, ID  
 G03 total strength=892  
 attack=1.86 defense=1.02  
 fall league = Idaho D3 U14 Div 2 U14  
 spr league = Spr Idaho D3 U14 Div 2

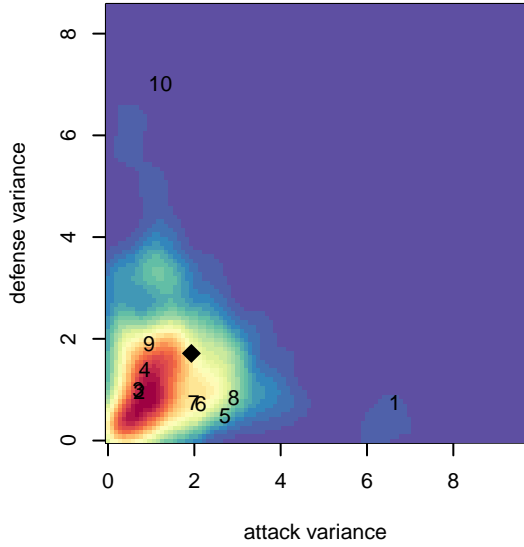
alt names used:  
 MHSC GIRLS (U14)  
 MHSC GIRLS '03-'04 U14

Venues played:  
 2016 Idaho D3 U14 Division 2 U14  
 2016 Spr Idaho D3 U14 Division 2

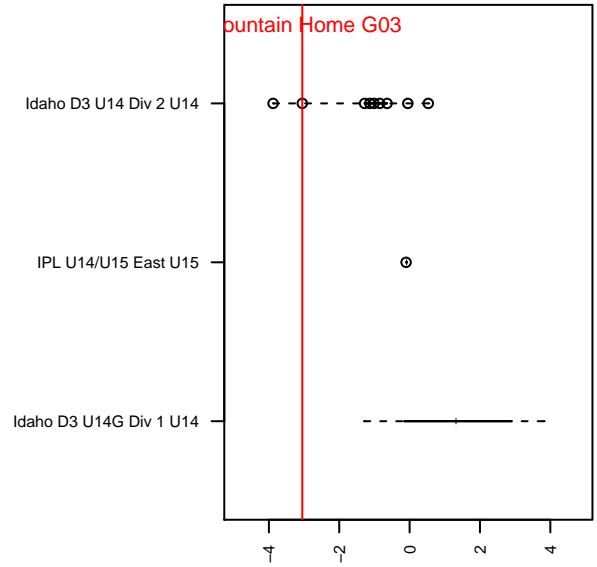
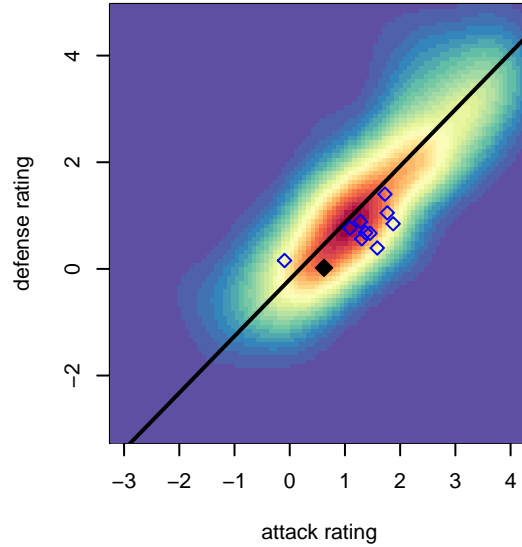
**Mountain Home G03**  
 Dots are actual minus expected GF (blue circles) and GA (red triangles).  
 Blue line is smoothed change in attack strength. Red is smoothed change in defense strength.



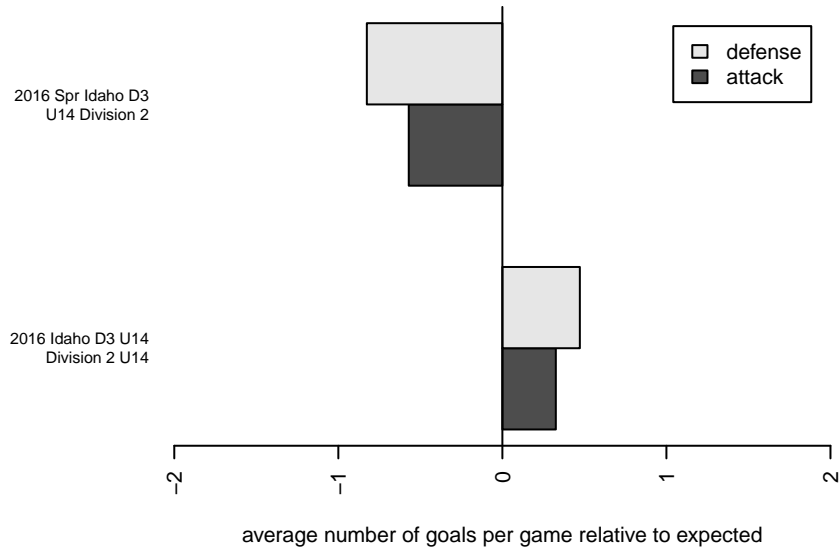
**attack and defense variance (black dot)  
relative to other teams  
and top 10 in region**



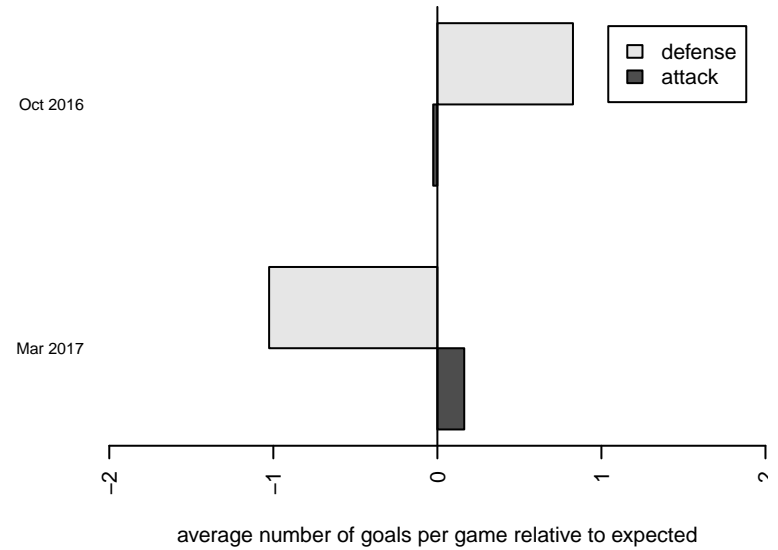
**attack and defense rating  
relative to others at age  
and all opponents in last 13 months**



**Performance relative to 13 month average**



**Performance relative to 13 month average**



<b>date</b>	<b>home</b>		<b>away</b>		<b>venue</b>	<b>pred.home</b>	<b>pred.away</b>
2017-04-08	Canyon Optimist Inferno G03	1	Mountain Home G03	0	2016 Spr Idaho D3 U14 Division 2	0.77	2.77
2017-03-18	Indie Chicas Cyan G03	6	Mountain Home G03	0	2016 Spr Idaho D3 U14 Division 2	5.38	0.71
2017-03-11	Mountain Home G03	1	FC Nova Red AH G03	4	2016 Spr Idaho D3 U14 Division 2	0.89	2.96
2017-03-04	FC Nova Red AO G03	4	Mountain Home G03	2	2016 Spr Idaho D3 U14 Division 2	2.58	0.91
2016-10-29	Union County United G03	5	Mountain Home G03	0	2016 Idaho D3 U14 Division 2 U14	3.69	1.29
2016-10-22	Mountain Home G03	2	Soccer Xpress Blast G03	5	2016 Idaho D3 U14 Division 2 U14	0.56	5.18
2016-10-15	Mountain Home G03	1	FC Nova Red AH G03	1	2016 Idaho D3 U14 Division 2 U14	0.89	2.96
2016-10-01	Mountain Home G03	1	Meridian United FC G03	1	2016 Idaho D3 U14 Division 2 U14	1.36	3.48
2016-09-24	Nampa Premier G03	4	Mountain Home G03	4	2016 Idaho D3 U14 Division 2 U14	5.12	1.56
2016-09-17	Meridian United FC Joe G03	4	Mountain Home G03	1	2016 Idaho D3 U14 Division 2 U14	3.43	1.21
2016-08-27	Idaho Rush Nero G03	7	Mountain Home G03	1	2016 Idaho D3 U14 Division 2 U14	6.45	0.85